

CLIENT: Dr.Ganja

PRODUCT NAME: HTE Strawberry Pie - Raw Material Analysis

LOT: N/A

BATCH: J061825OW

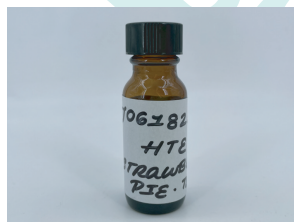
MATRIX: Hemp Oil

REPORT CREATED: 06/25/2025

Analyte	LOD (%)	%	mg/g
CBC	0.030		
CBCA	0.030	2.700	27.003
CBCV	0.030		
CBD	0.030		
CBDA	0.030	0.411	4.107
CBDV	0.030		
CBDVA	0.030		
CBG	0.030		
CBGA	0.030	8.772	87.716
CBL	0.030		
CBLA	0.030		
CBN	0.030		
CBNA	0.030	0.163	1.631
CBT	0.030		
Δ8-THC	0.030		
Δ9-THC	0.030		
Δ9-THCA-A	0.030	54.950	549.495
Δ9-THCP	0.030		
Δ9-THCVA	0.030	0.457	4.573
9R-HHC	0.030		
9S-HHC	0.030		

**59.156%**

**ACTIVE CANNABINOIDS**



Total THC = THCa \* 0.877 + Δ9-THC; Total THCV = THCVa \* 0.877 + THCV; Total CBD = CBDa \* 0.877 + CBD;  
 Total CBG = CBGa \* 0.877 + CBG; Total CBN = CBNa \* 0.877 + CBN  
 LOD = Limit of Detection; ND = Not Detected  
 Total THC Measurement of Uncertainty: ± 1%  
 Total CBD Measurement of Uncertainty: ± 1%



DATA COLLECTED BY Cannalyze.co

Reporting limits will vary based on sample extraction weight used for the analysis. The results of this report are based solely on the sample submitted and cannot be reproduced. Average values are used to determine the final values.