

CLIENT: Dr.Ganja

PRODUCT NAME: DD Cartridge Skywalker OG - Raw Material Analysis

LOT: N/A

BATCH: O102024ED

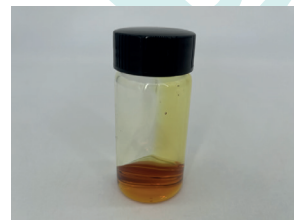
MATRIX: Hemp Oil

REPORT CREATED: 10/24/2024

Analyte	LOD (%)	%	mg/g
CBC	0.030		
CBCA	0.030	0.719	7.195
CBCV	0.030		
CBD	0.030		
CBDA	0.030	0.200	1.995
CBDV	0.030		
CBDVA	0.030		
CBG	0.030		
CBGA	0.030	1.474	14.743
CBL	0.030		
CBLA	0.030		
CBN	0.030		
CBNA	0.030	1.200	11.995
CBT	0.030		
Δ8-THC	0.030		
Δ9-THC	0.030		
Δ9-THCA-A	0.030	98.049	980.490
Δ9-THCP	0.030		
Δ9-THCVA	0.030	0.575	5.747
9R-HHC	0.030		
9S-HHC	0.030		

**89.644%**

**ACTIVE CANNABINOIDS**



Total THC = THCa \* 0.877 + Δ9-THC; Total THCV = THCVa \* 0.877 + THCV; Total CBD = CBDa \* 0.877 + CBD;  
 Total CBG = CBGa \* 0.877 + CBG; Total CBN = CBNa \* 0.877 + CBN  
 LOD = Limit of Detection; ND = Not Detected  
 Total THC Measurement of Uncertainty: ± 1%  
 Total CBD Measurement of Uncertainty: ± 1%



DATA COLLECTED BY Cannalyze.co

Reporting limits will vary based on sample extraction weight used for the analysis. The results of this report are based solely on the sample submitted and cannot be reproduced. Average values are used to determine the final values.